

# CERTIFICATE OF LOCATION OF GOVERNMENT CORNER

WEST 1/4 Corner of Section 30, Township 105N, Range 42W, 5TH P.M.

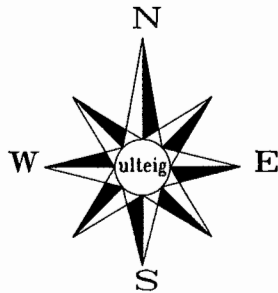
STATE OF MINNESOTA, County of MURRAY

At the corner location shown on the sketch:

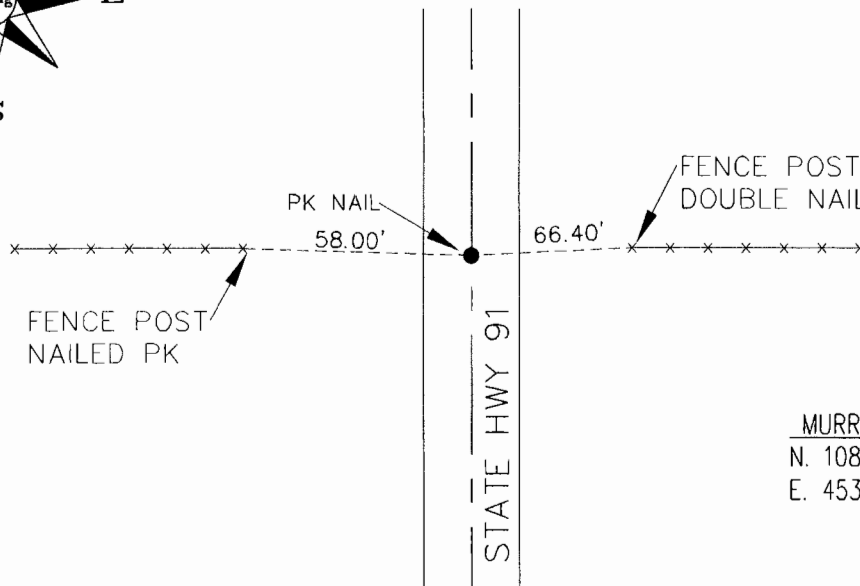
On 2-13-08 found a FOUND PK NAIL IN CENTERLINE STATE HWY 91  
DATE

left monument as found,  lowered monument,  removed monument (explain)

On \_\_\_\_\_ placed a \_\_\_\_\_  
DATE



## SKETCH OF REFERENCE TIES



MURRAY CO. COORDINATES  
N. 108210.42  
E. 453208.96

- MONUMENT INPLACE
- MONUMENT SET

NOT TO SCALE  
NO OTHER TIES AVAILABLE  
BEARING SYSTEM IS ASSUMED

Statement of evidence relative to this corner location is on back of page.

I hereby certify that this document and the data contained herein was prepared by me or under my direct supervision.

[Signature]  
SURVEYOR'S NAME  
2-26-08  
DATE

Registration No. 40827

- Land Surveyor,  Professional Engineer
- County Surveyor,  County Engineer

OFFICE OF THE COUNTY RECORDER

County of MURRAY

I hereby certify that this document was filed in the Co. Recorders office at \_\_\_\_\_ .M. on the \_\_\_\_\_ day of \_\_\_\_\_ A.D., 20\_\_\_\_

County Recorder [Signature]

By \_\_\_\_\_, Deputy

DOCUMENT NO. MAR 1 8 2008

STATEMENT OF EVIDENCE:

WEST 1/4 CORNER, SECTION 30, T.105 N., R.42 W.,  
MURRAY COUNTY, MINNESOTA

- 1861 J.W. Myers, U.S. Deputy Surveyor, monumented corner.
- 2008 Ulteig Engineers, Inc., Survey Crew, Jay Johnson Party Chief, found a PK-nail in the centerline of State Hwy 91.  
Ties: W-58.00' to a PK-nail in wood fence post;  
E-66.40' to a double nail in wood fence post.